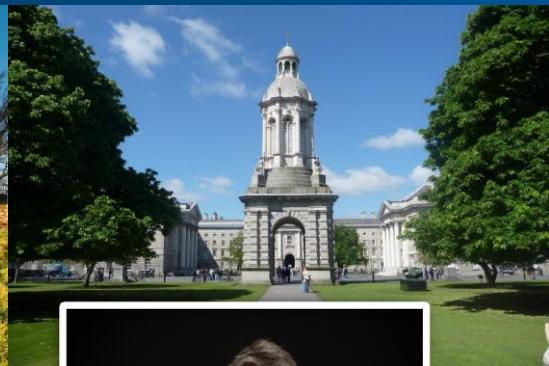


Space is limited. Register Today!



UNITED KINGDOM



September 5 – 15, 2024

Including the optional Ireland extension: September 5 – 20

Especially designed for:

**St. Thomas
Episcopal Church**

The Rev. Fran Gardner-Smith &
The Rev. Dr. David Smith

Pilgrimage Hosts



Faith Journeys

1440 S. Priest Dr., Suite 102 Tempe, AZ 85281

877-7FAITHJ • 480-894-8407 • fax: 480-894-5137 • info@myfaithjourneys.com

St. Thomas Episcopal Church

Pilgrimage to England and Scotland
With an optional extension to Ireland

11 days / 9 nights

Day 1: Thursday, September 5, 2024: Departure from the USA

Fly from DC airport to Manchester, England

Day 2: Friday, September 6: Manchester - York (D)

Arrive in Manchester – clear customs and immigration – meet driver and guide – travel to Bolton Abbey for a visit – Continue on to York – Check in to hotel – dinner – Compline – overnight.

Day 3: Saturday, September 7: York (B,D)

After breakfast, walking tour of York Minster – Jorvik and dig site – Free time in the city to walk the walls - Return to the Minster for Evensong. Dinner and overnight in York.

Day 4: Sunday, September 8

York – Durham – Hadrian's Wall - Newcastle (B,D)

After breakfast, check out - departure for Durham – Visit Whitby Abbey – Visit Durham Cathedral and grounds – Lunch in Durham - Visit Hadrian's Wall (Heddon-on-the-Wall) – Continue to Newcastle-upon-Tyne for Dinner and overnight

Day 5: Monday, September 9: Newcastle – Holy Island (B,D)

Morning transfer to Holy Island (depending on tidal schedule) – Spend the day on the Island – Continue on to Edinburgh to check in - Dinner (meet with church leaders at St. John's about ministry to the city) - Overnight.

Day 6: Tuesday, September 10: Edinburgh (B,D)

Following breakfast – start at Edinburgh Castle (special stop at St. Margaret's Chapel) – Next, St. Giles Cathedral – Royal Mile – Canongate Kirk – End at Holyrood House – Lunch – In the afternoon, travel to South Queensferry (founded by St. Margaret) and Dunfermline – Return to Edinburgh for overnight.

Day 7: Wednesday, September 11: Stirling - Glasgow (B,D)

After breakfast, check out – visit Stirling Castle and Church of the Holy Rood (tie to King James) – Continue to Glasgow visit St. Mary's Cathedral for a conversation with Cathedral staff about how they serve the Glasgow community. Dinner and overnight in Glasgow.

Day 8: Thursday, September 12: Glasgow - Iona (B,D)

Early breakfast and departure for Oban – cross to the Isle of Mull – Ferry onto Iona – Settle into two nights on the island.

Day 9: Friday, September 13: Iona (B, D)

Full day on the Isle of Iona

Day 10: Saturday, September 14: Iona - Glasgow (B, D)

Early breakfast and return to the Scottish mainland – Likely overnight in Glasgow (depending on the travel and flight times).

Day 11: Sunday, September 15: Flight Home (B)

Return to the US on a regularly scheduled flight from Glasgow or Edinburgh



Optional Ireland Extension:

Day 11: Sunday, September 15: Glasgow – Irish Sea - Belfast (B,D)

After dropping returning pilgrims to the airport, continue on to Stranraer to board a ferry and cross the Irish Sea to Belfast, Northern Ireland. Enjoy a quick panoramic tour of the city before checking into your hotel for dinner and a free evening. Overnight in Belfast.



Day 12: Monday, September 16: Belfast (B,D)

Breakfast. Spend the day exploring Belfast. Visit the Titanic Museum and the Crumlin Road Gaol. The afternoon will be free for exploring your own interests. Dinner and overnight in Belfast.



Day 13: Tuesday, September 17: Belfast – Downpatrick – Dublin (B,D)

Following breakfast, check out and travel the short distance to Dublin. Along the way, stop at Downpatrick to visit the St. Patrick's Center, Cathedral, and grave of St. Patrick (Sts. Brigid and Columba are also said to be buried there). Continue to Dublin for some free time. Dinner and overnight in Dublin.

Day 14: Wednesday, September 18: Dublin (B,D)

Breakfast. Today's visit includes Trinity College and the Book of Kells, Christ Church Cathedral, and the Guinness Factory. The afternoon could be free for exploring the city. Following a group dinner, travel to a traditional Belfast pub to experience local culture through word, song, and dance.



Day 15: Thursday, September 19: Glendalough – Kildare – Dublin (B,D)

What trip to Ireland wouldn't be complete without experiencing a "Thin Plan" from Celtic Christianity? Travel into the Wicklow Mountains to Glendalough and St. Kevin's Monastery. Return to Dublin via Kildare. Visit St. Brigid's Cathedral and Brigid's Well before returning to Dublin. Enjoy a celebration group dinner to conclude your time in Ireland. Overnight in Dublin.



Day 16: Friday, September 20: Flight Home (B)

After breakfast, check out of your hotel and transfer to Dublin Airport and your flight home to the United States.



**UNITED KINGDOM
FAITH JOURNEYS
Cost Estimates
ST. THOMAS EPISCOPAL CHURCH**

SPACE IS LIMITED. REGISTER TODAY!

Pilgrimage price with self-arranged airfare (Land-Only): \$4,707

Pilgrimage price including airfare from Washington, D.C.: \$6,295

(U.S. government taxes, fees, and airline fuel surcharges up to \$550 included –

pricing is based on a minimum 20 pilgrims, staying in double occupancy; private room \$662 additional for the main tour)

<u>Payment Schedule</u>		<u>Cancellation Penalty</u>	
Payment constitutes acceptance of all terms and conditions		Cancellations on or after the dates listed below	
		In addition to Section 4 under Terms & Conditions	
\$500 per person	With Registration Form	\$100 per person	Upon Receipt
		\$200 per person	February 8, 2024
\$1,500 per person	March 9, 2024	\$500 per person	May 8, 2024
		\$1,000 per person	June 7, 2024
Balance	June 7, 2024	Full Tour Cost	July 22, 2024

Space is available on a first come basis, and registrations are processed in the order they are received by Faith Journeys.

	<i>25+ Pilgrims</i>	<i>20-24 Pilgrims</i>	<i>15-19 Pilgrims</i>	<i>10-14 Pilgrims</i>
OPTIONAL IRELAND EXTENSION 6 Days / 5 Nights BELFAST, DUBLIN	\$1,891	\$2,050	\$2,388	\$2,832

(Costs are based on staying in double occupancy; private room \$371 additional)

These costs are based on payments made by check or cash-equivalent to qualify for our lowest discounted prices. If you choose to pay by credit card a 3% (non-refundable) accounting fee applies. All tour prices quoted for transportation and land arrangements herein are based on rates (including foreign exchange rates) in effect at the date of this offer and are subject to change. Adjustments may be made if the exchange rate varies more than 5%.

To Register, visit: portal.myfaithjourneys.com Group Number: **24035**



UNITED KINGDOM
FAITH JOURNEYS
Cost Inclusions & Exclusions
ST. THOMAS EPISCOPAL CHURCH

COST INCLUSIONS

- **AIRLINE TRANSPORTATION:** Round-trip transportation by scheduled airline carrier from **Washington, D.C.** Air fares are subject to change pending space availability at the time of group booking.
 - Includes up to \$550 for U.S. Government airline taxes, fees, and estimated fuel surcharge.
- **COACH TRANSPORTATION:** Local modern deluxe motorcoach transportation within England, Scotland, and Ireland upon arrival and available for the entire tour.
- **ACCOMMODATIONS:** Hotel accommodations in superior tourist-class (3 & 4-star) hotels chosen for location, reputation, cleanliness, and service. The price is based on double occupancy, all rooms with private facilities. All hotels mentioned in this quote are used as reference only and are subject to availability at group rates at the time of booking. City centre accommodations are available at a supplement upon request. This offer is based on staying at the following accommodations, or similar:

York: Holiday Inn Tadcaster Road	Newcastle-upon-Tyne: Maldron Hotel
Edinburgh: Holiday Inn Corstorphine Road	Glasgow: Leonardo Hotel
Iona: St. Columba Hotel	Belfast: Clayton Hotel
Dublin: Clayton Leopardstown	
- **MEALS:** Two meals per day (as noted in the Tour itinerary) including breakfast and dinner. Please note that breakfast is not included on day of arrival and dinner is not included on day of departure.
- **ENTRANCE FEES:** Entrance fees are included based on inclusions on the itinerary.
- **TOUR ITINERARIES:** Electronic versions of the tour itinerary are available listing hotel addresses, telephone and fax numbers.
- **TOUR MANAGEMENT:** One full-time, multi-lingual Tour Manager will be on each motorcoach through the entire tour. Faith Journeys' office staff is easily available 24 hours daily (even on weekends) to render assistance whenever needed.
- **EXCURSIONS:** Conducted by licensed, professional guides utilizing personal headsets as outlined in the day-by-day Tour itinerary.
- **GRATUITIES:** Tips to hotel personnel (including meals) are included. Tips to tour manager(s), licensed guides, and motorcoach driver(s) are not included.
- **EACH PARTICIPANT RECEIVES:**
 - 2 Luggage tags
- **TRAVEL NOTES:** Pre-departure Travel Notes are available to each participant containing useful information about travel preparation, destination information, useful packing and cultural conditioning suggestions.
- **LIABILITY INSURANCE:** \$3M Faith Journeys Tour Liability Insurance coverage.

COST EXCLUSIONS

- Single Occupancy Supplement: \$662 for the main tour; \$371 for the optional Ireland extension.
- Travel Visa for non-U.S. passport holders.
- Tips to Tour Manager(s), city guides and motorcoach driver(s).
- Travel Insurance
- Transportation to and from departure airport.
- Drinks at dinners.
- Daily lunches.
- Airline luggage fees, if applicable.
- Difference between current and actual costs for the airline taxes and the estimated fuel surcharge, if applicable.



**UNITED KINGDOM
FAITH JOURNEYS
Cost Inclusions & Exclusions
ST. THOMAS EPISCOPAL CHURCH**

TRAVEL INSURANCE (Optional)

We highly recommend travel insurance to cover trip cancellation/interruption, travel delay, emergency medical, baggage delay and accidental death coverage. Please read the information and decide on your policy now. **If you purchase the insurance at the time of your initial deposit for your trip, the travel insurance covers you even if you must cancel or interrupt your trip due to a pre-existing medical condition.** PLEASE REFER TO THE INSURANCE FLYER SUPPLIED TO YOUR TOUR HOST FOR LIMITATIONS AND FOR ANSWERS TO SPECIFIC QUESTIONS Note: insurance payments are non-refundable. “CFAR” refers to Cancel For Any Reason. May be added to the deposit to Faith Journeys:

Trip Cost (per person)	Insurance Cost (per person) Including CFAR	Insurance Cost (per person) NOT Including CFAR
Up to \$250	\$38.00	\$24.00
\$251 - \$500	\$44.00	\$28.00
\$501 - \$750	\$71.00	\$45.00
\$751 - \$1,000	\$85.00	\$54.00
\$1,001 - \$1,500	\$115.00	\$73.00
\$1,501 - \$2,000	\$137.00	\$86.00
\$2,001 - \$2,500	\$190.00	\$120.00
\$2,501 - \$3,000	\$212.00	\$134.00
\$3,001 - \$4,000	\$244.00	\$154.00
\$4,001 - \$5,000	\$330.00	\$208.00
\$5,001 - \$6,000	\$374.00	\$236.00
\$6,001 - \$7,500	\$439.00	\$278.00
\$7,501 - \$9,000	\$508.00	\$321.00
\$9,001 - \$10,000	\$586.00	\$370.00



TRAVEL PROTECTION PLAN

Sometimes it happens - an emergency at home or a sickness causes people to cancel their vacation or interrupt their trip. We hope this doesn't happen to you, but if it does, what about the financial costs involved? And what about losing your personal belongings or becoming ill while on your trip?

Because these unfortunate events can occur, a travel protection plan offered and administered by Trip Mate, Inc. is available with all Faith Journeys International travel arrangements. This high-quality travel insurance plan covers your vacation investment, your belongings, and most importantly, you. This travel protection plan covers you even if you must cancel or interrupt your trip due to a pre-existing medical condition - if you purchase the plan within 30 days of your initial deposit/payment for your trip.

Outlined below are the major benefits of the plan. A "Travel Insurance Certificate" which provides complete details of the plan, including conditions, exclusions and limitations will be included with your initial invoice and is also available to you, upon request, at any time prior to your purchase of the plan

CANCELLATION/INTERRUPTION – TRIP COST

If you cancel your Trip for a covered reason, you will be reimbursed up to the amount in the Schedule, for the amount of unused non-refundable prepaid expenses for Travel Arrangements, forfeited, non-refundable Payments or Deposits that you paid for your Trip. If you have to cancel or interrupt your Trip due to a covered injury, sickness or death - your own or that of a Traveling Companion or Family Member - or for Other Covered Reasons, as defined, you will be reimbursed up to the Trip cost for unused land or water travel arrangements, plus additional transport charges paid to return home or to rejoin your Trip.

TRAVEL DELAY

Provides reimbursement up to \$200 per day (maximum \$2,800) for reasonable accommodation and traveling expenses until travel becomes possible if you are delayed for 12 hours or more due to a covered reason such as: any carrier delay; Injury, Sickness or death of you or your Traveling Companion; quarantine; loss of passport, travel documents or money; or natural disaster.

MISSED CONNECTION - \$750

If your arrival at your trip destination is delayed for 3 hours or more due to a certified delay of a Common Carrier, inclement weather, unannounced strike, natural disaster or terrorism, you will be reimbursed for the cost of your unused land or water arrangements, plus the additional transportation expense incurred to join your trip.

ACCIDENTAL DEATH & DISMEMBERMENT - \$25,000

These benefits are paid if loss occurs within 180 days of a covered Injury that occurs while on your Faith Journeys Trip.

MEDICAL EXPENSE/EMERGENCY ASSISTANCE - \$25,000

Provides reimbursement for reasonable and customary medical expenses incurred within 52 weeks of a covered Injury or Sickness that occurs while on your Faith Journeys Trip, or for emergency dental treatment received during your Trip not to exceed \$750; the cost of emergency transport to Home or an appropriate Hospital, including escort expense (both, if deemed necessary by the attending Physician), for a covered Injury or Sickness that occurs while on your Trip, or the cost of homeward carriage if deceased.

BAGGAGE AND PERSONAL EFFECTS - \$1,500

Coverage for direct physical loss or damage to your Baggage, passports or visas while on your Trip. A \$600 maximum limit applies to jewelry, watches, cameras and camera equipment, and furs — a \$300 per article limit applies to all other items. If, while on your Trip, your Baggage is delayed for 24 hours or more, we will pay up to \$100 for the purchase of necessary additional clothing and personal articles.

CANCEL FOR ANY REASON – 75% of Non-Refundable Cost

You will be reimbursed up to 75% of the unused non-refundable prepaid payments. 1) Payment for this plan must be received within 60 days prior to the scheduled departure date of your trip or if your trip is initially booked within 60 days of the scheduled departure date of your trip, your payment for this plan is received with the initial payment or deposit and 2) cancellation must be prior to two (2) days prior to the scheduled departure.

Conditions & Limitations

Certain exclusions and limitations apply and are detailed in the "Travel Insurance Certificate". For example, coverage does not apply to: any sickness or condition of you, a Traveling Companion or Family Member traveling with you that existed during the 60 days prior to the effective date of the coverages (this exclusion is waived if your premium is received within 7 days of your initial deposit/payment for your Trip), suicide, normal pregnancy, war or any act of war. Other Covered Reasons, as defined, includes the following events or their consequences: Cancellation or Interruption of your Trip due to: Inclement Weather, unannounced Strike, mechanical breakdown that causes complete cessation of services of Your Common Carrier for at least 12 consecutive hours; a documented traffic accident while en route to departure; being hijacked or quarantined; jury duty; destruction of your home or destination by fire, flood, burglary or natural disaster; being called to the emergency service of government to provide aid or relief in the event of a natural disaster; a documented theft of passports or visas; a transfer of employment of 250 miles or more; involuntary job termination (must be employed with same employer for 1 year) ; a Terrorist Incident which occurs in a city listed on your itinerary for the trip and occurs within 30 days prior to Your Scheduled Departure Date or revocation of military leave due to war.

The Travel Protection Plan is underwritten by: United States Fire Insurance Company, Eatontown, NJ. Benefits are administered by: Trip Mate, Inc.*, 9225 Ward Parkway, Suite 200, Kansas City, Missouri, 64114, 800-888-7292 (*In CA, dba Trip Mate Insurance Agency)



Terms & Conditions

1. PAYMENT TERMS

- 1.1. **Payment.** Client shall strictly comply with the Payment Schedule on or before the due date. Faith Journeys ("FJ") accepts payment by check or, with a non-refundable 3% surcharge, Visa and MasterCard. Checks should be made payable to Faith Journeys LLC.
- 1.2. **Additional Deposits.** From time to time, FJ may request one or more deposits over and above those set forth in the Payment Schedule (the "Additional Deposits"). Additional Deposits may be required because of travel during peak periods, the unique nature of the facilities, or any other matter which, in FJ's sole opinion, requires an additional deposit. FJ will consult with Client's tour organizer before making a request for an Additional Deposit, but FJ's decision whether and Additional Deposit is necessary is final. Client shall pay an Additional Deposit within thirty (30) days of the request by FJ.

2. DUTIES AND OBLIGATIONS OF FJ

- 2.1. **Scope and Exclusivity.** FJ shall have the duties and obligations set forth in this Section 2 and no others.
- 2.2. **Services Supplied by FJ.** FJ will provide the transportation, transfers, airfare, lodging and services specified in the attached tour brochure on the terms provided herein. FJ reserves the right to vary itineraries and/or destinations and to substitute hotels if circumstances beyond its control necessitate such change(s). FJ reserves the right to use any photos submitted to Group Travel Video's for promotional purposes as it sees fit.
- 2.3. **Services Excluded by FJ.** All transportation, charges, services or other items not specifically identified in the tour brochure for this trip are not covered and must be paid by Client separately. Excluded services and items include, but are not limited to, tips to local guides; meals and beverages other than those noted in the tour brochure; expenses of a personal nature such as laundry, telephone, valet, etc.; portage for hand-carried luggage; passport and visa fees; free time activities; optional excursions and coach driver and guide/escort gratuities.
- 2.4. **Special Equipment and Excess Luggage Needs.** Special technical equipment (including musical instruments), excess or oversize luggage and the transportation for such are not included. Any piece of luggage/equipment over 50 pounds or exceeding 62 inches (length+ width + height) is subject to additional charges.

3. LIMITATIONS ON LIABILITY AND INDEMNIFICATION

- 3.1. **Limitation on Liability of FJ.** FJ, its agents and cooperating organizations expressly disclaim all responsibility and/or liability of any nature for loss, damage or injury to property or person due to any cause whatsoever occurring during a tour under its management, except damaged caused by the gross negligence of FJ.
- 3.2. **Client's Indemnification.** Client shall hold FJ, its agents, employees, contractors and affiliated organizations harmless from, and indemnify and defend same against, any and all claims or liability for any injury (including death) or damage to any person or property whatsoever occurring during the tour, or any part thereof, when such injury or damage has been caused in part or in whole by the act, neglect, fault, or omission of Client, its agents, servants, employees, or invitees. The provisions of this Paragraph 3.2 shall survive the expiration or termination of this Agreement with respect to any claims or liability occurring prior to such expiration or termination.

4. CANCELLATION

- 4.1. **Right to Cancel.** Client shall be entitled to cancel this Agreement only upon the terms set forth in this Section 4.
- 4.2. **Cancellation Schedule.** Subject to the terms of the remainder of this Section 4, and provided that Client has made all payments required under the Payment Schedule, Client may cancel this Agreement by providing written notice of the cancellation to FJ. Upon providing such notice, Client is entitled to return of deposits, if any, in accordance with the Cancellation Schedule set forth in the attached tour brochure. The balance of any deposits made by Client, including any Additional Deposits, shall be retained by FJ.
- 4.3. **Limitations on Cancellation.** Notwithstanding the provisions of the preceding Section 4.2, upon providing notice of cancellation to FJ, Client shall not be entitled to refund of any deposits which have been used by FJ to reserve space or fares if the deposits for space or fares are non-refundable to FJ from the providers. Further, in the event that the payments or deposits made by Client are less than the amounts paid by FJ to reserve space or fares which are non-refundable, Client shall not receive any funds pursuant to the Cancellation Schedule and shall remain liable to FJ for any shortfall. Client shall remain liable to FJ for any actual damages to FJ resulting from Client's cancellation of the Agreement.

5. CLIENT'S BREACH AND DEFAULT

- 5.1. **Breach.** Upon the breach of any term of this Agreement, including but limited to failure to strictly comply with the payment terms, failure to timely make Additional Deposits, or violation of any of the rules and regulations of FJ, FJ may, at its option, declare the Client in default and terminate its obligation to perform further under this Agreement. Upon any breach of this Agreement, by failure to make payments or otherwise, FJ may, in its sole and absolute discretion, allow the Client to remedy the breach by making the required payments or deposits, or by otherwise performing as required. However, all late payments, if accepted by FJ, will be charged a late fee of one and one-half percent (1 1/2 %) of the unpaid balance per month.
- 5.2. **FJ's Remedies.** Upon any breach this Agreement, by failure to make a payment, or otherwise, Client forfeits its entire deposit and FJ may attempt to reschedule, resell or reuse any goods or services previously purchase or reserved for Client's benefit including, but not limited to, air or other transportation and hotel accommodations.

6. JURISDICTION AND GOVERNING LAW

Any dispute of any kind arising out of or from a claimed breach of this Agreement shall be resolved in the Superior Court of Maricopa County, Arizona, and Client consents to venue and jurisdiction in that Court. Client further agrees that all disputes arising from this Agreement shall be resolved in accordance with Arizona law.

7. ATTORNEY'S FEES

In the event of any legal action or proceeding arising out of this Agreement, the prevailing party shall be entitled to recover its reasonable attorneys' fees and related costs incurred in such action and such amount shall be included in any judgment rendered in such proceeding.

8. WAIVER

No waiver by FJ of any provision of this Agreement or of any breach by Client hereunder shall be deemed to be a waiver of any other provision hereof, or of any subsequent breach by Client of the same or any other provision. FJ's consent to or approval of any act by Client requiring FJ's consent or approval shall not be deemed to render unnecessary the obtaining of FJ's consent to or approval of any subsequent act of Client.

9. NOTICES

All notices, demands or other communications in this Agreement provided to be given, made or sent by either party to the other shall be deemed to have been duly given, made or sent when made in writing and deposited in the United States mail, certified or registered, postage prepaid, and addressed to the respective party at the appropriate address set forth in the Initial Terms.

10. INTEGRATION AND AMENDMENTS

The provision of this Agreement, including these Terms and Conditions and any rules and regulations of FJ, supersede any oral or written agreement between the parties, and any such oral or written agreement is hereby integrated into this Agreement. To the extent it conflicts with this Agreement, any information found in any advertising material, brochure, or web site is hereby superseded by this Agreement. Any amendment to or revision of this Agreement must be in writing and signed by both parties.

11. ACTS OF GOD



If the tour is canceled by reason of Force Majeure, as defined in this paragraph, FJ's liability to Client is expressly limited as set forth in this paragraph. For purposes of this Agreement, "Force Majeure" means any event or circumstances that FJ or the supplier of the services in question could not foresee or avoid. Such events and circumstances include, without limitation, acts of God, actual or threatened; war, terrorist activity or the threat thereof; labor disputes, industrial actions, or strikes; martial law; state of emergency; earthquake, adverse weather conditions, tsunami, hurricane, or other natural activity; civil actions; technical or maintenance problems with transport; changes of schedules or operational decisions of air carriers, providers of ground transportation, hotels, amphitheaters, or other venues; nuclear activity; epidemic, pandemic, illness, physical injury, quarantine, medical or customs or immigration regulation, delay, or cancellation; fire; and any similar events outside FJ's control. In the event that there is a cancellation or delay by reason of Force Majeure, Client shall have the option of (a) taking a refund pursuant to the provisions for cancellation above, or (b) selecting an alternate program through FJ, provided that, given the circumstances of the Force Majeure, FJ is able to offer an alternate program at a time that is mutually agreeable to both Client and FJ.

12. TRAVEL CONDITIONS

- 12.1. **Hotels.** Hotels utilized are doubles/twins. Each room will have private facilities, including shower or bath. A supplement surcharge is applicable to participants in single accommodations.
- 12.2. **Fluctuations, Substitutions with Group.** Client may, under certain circumstances, substitute another person in their stead. Substitutions on flights are allowed subject to the terms of the airline contract. The addition of a new person is charged at the best price available. FJ will use its best efforts to keep the new person at the group rate.
- The following fees apply for substitutions:
- On or after 180 days before departure the substitution fee is \$50
 - On or after 120 days before departure the substitution fee is \$100
 - On or after 90 days before departure the substitution fee is \$150
 - On or after 60 days before departure the substitution fee is \$350
 - On or after 45 days before departure the substitution fee is \$1000
- Substitutions are not possible less than 5 days before departure
*FJ must receive the substitution deposit/payments before making a refund to the Client.
- 12.3. **Rooming List and Late Changes.** FJ must receive the rooming lists no later than 45 days prior to departure from Client's tour organizer. Late changes in the rooming list, including name changes, additions and deletions are subject to a late change/penalty of \$25.00 per person. This charge covers the costs of administrative expenses, long distance telephone calls, over-night mail charges, etc.
- 12.4. **Flight Arrangements:** All flights will be by scheduled I.A.T.A. carriers with the routing and scheduling at the discretion of FJ. Tour price is based on mid-week travel and air fare flying round trip from the location stated in the tour brochure. Any increase in air fare shall be borne by the participant. Airline taxes and fuel surcharges are not included in price. The operators providing transportation are not responsible for any act, omission or event during the time that passengers are not on board their aircraft or conveyances. FJ has no responsibility or liability of any nature whatsoever for loss, damage, or injury to property or person resulting from the provision of air or motorcoach transportation. The price of a vacant seat and the cost of segments of the program lost due to missing scheduled departure or absences during the tour cannot be refunded. If Client misses any included transportation segment (e.g. flight, transfer, bus or train departure), Client is responsible to make arrangements for and to pay the cost of rejoining the group.
- 12.5. **Deviations:** Late return deviations are sometimes permitted from the original city of departure, for a minimum fee of \$150, if the class of service is still available at time of booking and if the carrier's fare rules permit the change. All deviations must be applied for by writing, faxing or emailing your request to Faith Journeys. When a deviation is confirmed by the airline, passengers will be notified and invoiced for all charges incurred for their deviation. Each subsequent change is subject to an additional \$50 processing fee, plus airline fees once confirmed. Deviations are difficult, especially during high season, so requests must be made as early as possible. Clients who deviate must arrange for their own ground transportation to and from the airport.

13. FREQUENT FLYER PROGRAM MEMBERS

If Client desires to use frequent flyer miles for free tickets, Client will need to book its flights directly with the airline and purchase a "Land Only" package from Faith Journeys. Faith Journeys is unable to provide ticket copies after departure for mileage credits. Client should check with their preferred carrier to determine if Client qualifies for any mileage accrual.

14. LAND ONLY

Any Client choosing the 'Land Only' package after their initial full-tour reservation has been made in writing, faxing or emailing, is subject to a \$50 change fee up to 60 days prior to departure. Anyone changing to a 'Land Only' option 60 to 0 days prior to departure will be subject to a \$1,000 change fee. If Client chooses the 'Land Only' option must arrange for their own ground transportation to and from the airports and any mid-tour flights.

15. TOUR PRICES

The services specified are based on a minimum of number of passengers. If this quota is not reached, the price of the tour will be increased proportionately. All tour prices quoted for transportation and land arrangements are based on rates (including foreign exchange rates) and taxes in effect at time of publication and are subject to change. Adjustments will be made when the exchange rate varies more than 5% at 120 days prior to departure. Confirmation of final air and land prices and taxes will be advised at that time.

16. TRAVEL INSURANCE

Travel insurance is highly recommended. Faith Journeys offers TRIP MATE travel insurance. Coverage includes Accidental Death & Dismemberment, Medical Expense/Emergency Assistance, Pre-Departure Trip Cancellation due to illness, Post-Departure Trip Interruption, Travel and Baggage Delay and loss of Baggage and Personal Effects. The non-refundable premium must be paid at the time of the initial deposit to include any pre-existing medical conditions that do not disable you from travel at the time the premium payment is made. A detailed copy of the Faith Journeys Travel Protection Plan Summary is provided with the tour brochure. All cancellations are subject to the terms and conditions stated therein unless the U.S. State Department bans travel to the countries included in the itinerary. Claims for refunds will be handled expeditiously and will be made within 60 days following the termination of the tour program.



Flight contracts – Frequent Flyer numbers – Seat changes/requests – “Land Only” packages

Group Air

Faith Journeys is a faith based tour company that specializes in exclusive group travel. We negotiate and secure **group air contracts** with all major airlines departing from the designated airport for each Faith Journeys group. This allows us to keep all passengers within the group traveling together, in most cases.

Group air contracts differ from individually purchased airline tickets in many ways. When group air contracts are negotiated, we are able to hold a large number of seats at the same rate until we ticket the group approximately 45 days prior to departure. We are limited in what types of deviations are allowed from the group contract and in some cases need to look at published, individual tickets. Taxes and fuel costs are subject to change until the tickets are issued.

All airlines require valid passport information including full name (first, middle and last), date of birth, gender, country, in which your passport has been issued and passport expiration date. To ensure that we are able to provide this information accurately, we require a photo copy of each person’s passport traveling on each tour. Faith Journeys will apply each registered passenger’s name to the group air contract approximately 60 days prior to departure. Communication is made with the group tour host to review passenger information before group ticketing is finalized with the airline.

Frequent Flyer Numbers

Frequent Flyer #'s are not always accepted in group air contracts at time of ticketing, however you may apply your FF# to your flight at the ticket counter on the day of your departure. Please make sure to have this information with you when you check-in upon arrival at the airport.

Seat Requests & Seat Changes

Faith Journeys makes every effort to honor each request received by our passengers regarding seating preferences. Please understand that although requests are being made directly with the airline, not every request is guaranteed or granted by the airline. If you would like to make any changes to your seat, you are welcome to contact the airline directly or change your seats upon check-in at the airport prior to departure.

“Land Only” Tour Package

Faith Journeys understands that some will wish to arrange their own air transportation for their tour. **Arranging transportation on your own gives you the ability to use your flight miles for your ticket, secure the seat you desire/require, or upgrade to business class or an extra leg room seat.** However, because our group air contracts allow us to hold space with the airline, we are able to limit cancellation penalties in the event of a group or passenger cancellation. Faith Journeys also reserves the right to search alternative flight schedules to better accommodate the group until shortly before ticketing. **If the flight schedule you purchase arrives or departs at a time different from the group, it is your responsibility to join the group either at the airport or at the first hotel.**





Faith Journeys



For More Information and to Register for this Pilgrimage, visit:
portal.myfaithjourneys.com
Group Code: 24035



1440 S. Priest Drive, Suite 102
Tempe, AZ 85281-6954

877-7-FAITH-J ♦ 480-894-8407 ♦ Fax: 480-894-5137

Website: www.myfaithjourneys.com ♦ E-mail: info@myfaithjourneys.com